



**BRST**<sup>™</sup>  
BREAST DESIGN

**ROUND BREAST IMPLANTS**



© Allergan Inc 2012  
™ Marks owned by Allergan Inc  
Datum přípravy materiálu: září 2015  
AGN/002/09/15



# Introducing our BRST™ range of implants – manufactured for quality

## Allergan – a valued heritage in aesthetic innovation

- Established over 60 years ago, today Allergan has over 8,000 employees with a presence in more than 100 countries
- Allergan are committed to developing and delivering meaningful treatments helping people reach their life's potential
- Allergan are recognised and trusted for creating The Natrelle™ Collection, the pinnacle of over 35 years experience in manufacturing breast implants and tissue expanders










- ✓ Quality in manufacturing
- ✓ Quality distribution
- ✓ Globally recognised quality standards

## Extensive range of popular implant options

- New range of round textured implants to help achieve the desired result

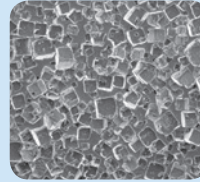
70 SKUs  
4 projection options

	RESPONSIVE GEL	COHESIVE GEL
Low profile	 10 implant options	 10 implant options
Medium profile	 10 implant options	 10 implant options
High profile	 10 implant options	 10 implant options
Extra high profile		 10 implant options

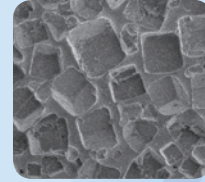


# Benefits of the BRST™ range – designed to meet your needs

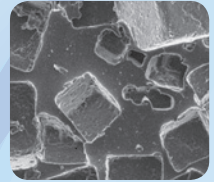
Microcell™ texture



10x Magnification



20x Magnification



30x Magnification

● DRIE™ barrier layer (incl. patch) *minimises silicone gel diffusion<sup>1</sup>*

● High performance silicone elastomer layers *for enhanced shell integrity*

● 2 Gel options *offer a choice to help achieve the desired outcome*

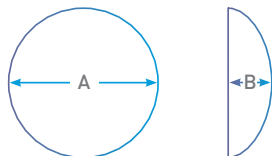
● Microcell™ texture *designed to reduce capsular contracture*

● Optimal fill volume *to reduce rippling*



# RLP/CLP

Low Profile



## Responsive Gel (10 sizes)

Catalogue Number	Product Size (g)	Diameter A (cm)	Projection B (cm)
RLP-145	145	10.0	2.6
RLP-165	165	10.5	2.7
RLP-190	190	11.0	2.8
RLP-220	220	11.5	3.0
RLP-250	250	12.0	3.1
RLP-280	280	12.5	3.3
RLP-320	320	13.0	3.4
RLP-360	360	13.5	3.5
RLP-400	400	14.0	3.6
RLP-440	440	14.5	3.8

# RMP/CMP

Moderate Profile



## Responsive Gel (10 sizes)

Catalogue Number	Product Size (g)	Diameter A (cm)	Projection B (cm)
RMP-175	175	10.0	3.3
RMP-210	210	10.5	3.5
RMP-240	240	11.0	3.7
RMP-275	275	11.5	3.9
RMP-310	310	12.0	4.0
RMP-345	345	12.5	4.2
RMP-375	375	13.0	4.3
RMP-445	445	13.5	4.5
RMP-485	485	14.0	4.6
RMP-520	520	14.5	4.8

## Cohesive Gel (10 sizes)

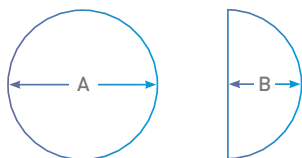
Catalogue Number	Product Size (g)	Diameter A (cm)	Projection B (cm)
CLP-145	145	10.0	2.6
CLP-165	165	10.5	2.7
CLP-190	190	11.0	2.8
CLP-220	220	11.5	3.0
CLP-250	250	12.0	3.1
CLP-280	280	12.5	3.3
CLP-320	320	13.0	3.4
CLP-360	360	13.5	3.5
CLP-400	400	14.0	3.6
CLP-440	440	14.5	3.8

## Cohesive Gel (10 sizes)

Catalogue Number	Product Size (g)	Diameter A (cm)	Projection B (cm)
CMP-175	175	10.0	3.3
CMP-210	210	10.5	3.5
CMP-240	240	11.0	3.7
CMP-275	275	11.5	3.9
CMP-310	310	12.0	4.0
CMP-345	345	12.5	4.2
CMP-375	375	13.0	4.3
CMP-445	445	13.5	4.5
CMP-485	485	14.0	4.6
CMP-520	520	14.5	4.8

# RHP/CHP

High Profile



## Responsive Gel (10 sizes)

Catalogue Number	Product Size (g)	Diameter A (cm)	Projection B (cm)
RHP-220	220	10.0	4.2
RHP-240	240	10.5	4.3
RHP-265	265	11.0	4.5
RHP-325	325	11.5	4.7
RHP-345	345	12.0	4.9
RHP-385	385	12.5	5.1
RHP-450	450	13.0	5.3
RHP-520	520	13.5	5.5
RHP-560	560	14.0	5.7
RHP-605	605	14.5	5.8

## Cohesive Gel (10 sizes)

Catalogue Number	Product Size (g)	Diameter A (cm)	Projection B (cm)
CHP-220	220	10.0	4.2
CHP-240	240	10.5	4.3
CHP-265	265	11.0	4.5
CHP-325	325	11.5	4.7
CHP-345	345	12.0	4.9
CHP-385	385	12.5	5.1
CHP-450	450	13.0	5.3
CHP-520	520	13.5	5.5
CHP-560	560	14.0	5.7
CHP-605	605	14.5	5.8

# CXP

Extra High Profile



## Cohesive Gel (10 sizes)

Catalogue Number	Product Size (g)	Diameter A (cm)	Projection B (cm)
CXP-255	255	10.0	4.8
CXP-285	285	10.5	5.0
CXP-310	310	11.0	5.4
CXP-375	375	11.5	5.7
CXP-420	420	12.0	5.9
CXP-470	470	12.5	6.2
CXP-525	525	13.0	6.3
CXP-560	560	13.5	6.4
CXP-615	615	14.0	6.5
CXP-700	700	14.5	6.6



**BRST**™  
BREAST DESIGN